

Imagine
with us!

Sustainability



Imagine
with us!



Imagine
with us!

Efficiency, One Gallon at a Time

Sam's Club is adopting a new, stronger milk container design that will streamline packaging, maintenance and delivery at lower cost to its customers. Other retailers may follow suit.



TRADITIONAL JUG

NEW DESIGN

			IMPACT
Packaging and Storage	Traditional milk jugs cannot be stacked and require crates for storage and transport.	The new milk containers have flat tops and ridged sides that allow multiple stacking, bound by cardboard bands and shrink wrap.	By eliminating the crates, the new containers store 4.5 gallons of milk in a cubic foot — 50 percent more than the 3 gallons stored in a cubic foot with the old jugs.
Maintenance	Plastic crates are reusable after being returned and washed.	After single use, the cardboard and shrink wrap are recycled.	No water is needed for washing, and no labor is required to load and return the crates.
Transport and Fuel	Four to five trips a week are required to deliver milk to a typical Sam's Club.	Two delivery trips are required each week.	Fewer trips by delivery trucks reduce fuel cost and consumption.

Source: Superior Dairy

Imagine
with us!

The New York Times

BUSINESS DAY

Solution, or Mess? A Milk Jug for a Green Earth

By STEPHANIE ROSENBLOOM JUNE 30, 2008

NORTH CANTON, Ohio — A simple change to the design of the gallon milk jug, adopted by Wal-Mart and Costco, seems made for the times. The jugs are cheaper to ship and better for the environment, the milk is fresher when it arrives in stores, and it costs less.

What's not to like? Plenty, as it turns out.

The jugs have no real spout, and their unorthodox shape makes consumers feel like novices at the simple task of pouring a glass of milk.

"I hate it," said Lisa DeHoff, a cafe owner shopping in a Sam's Club here.



Imagine
with us!



AKRON CIVIC
COMMONS

Imagine
with us!



AKRON CIVIC
COMMONS

Imagine
with us!



Making something sustainable must improve the product.

Imagine with us!



RCC Akron:

- Downtown

Imagine
with us!

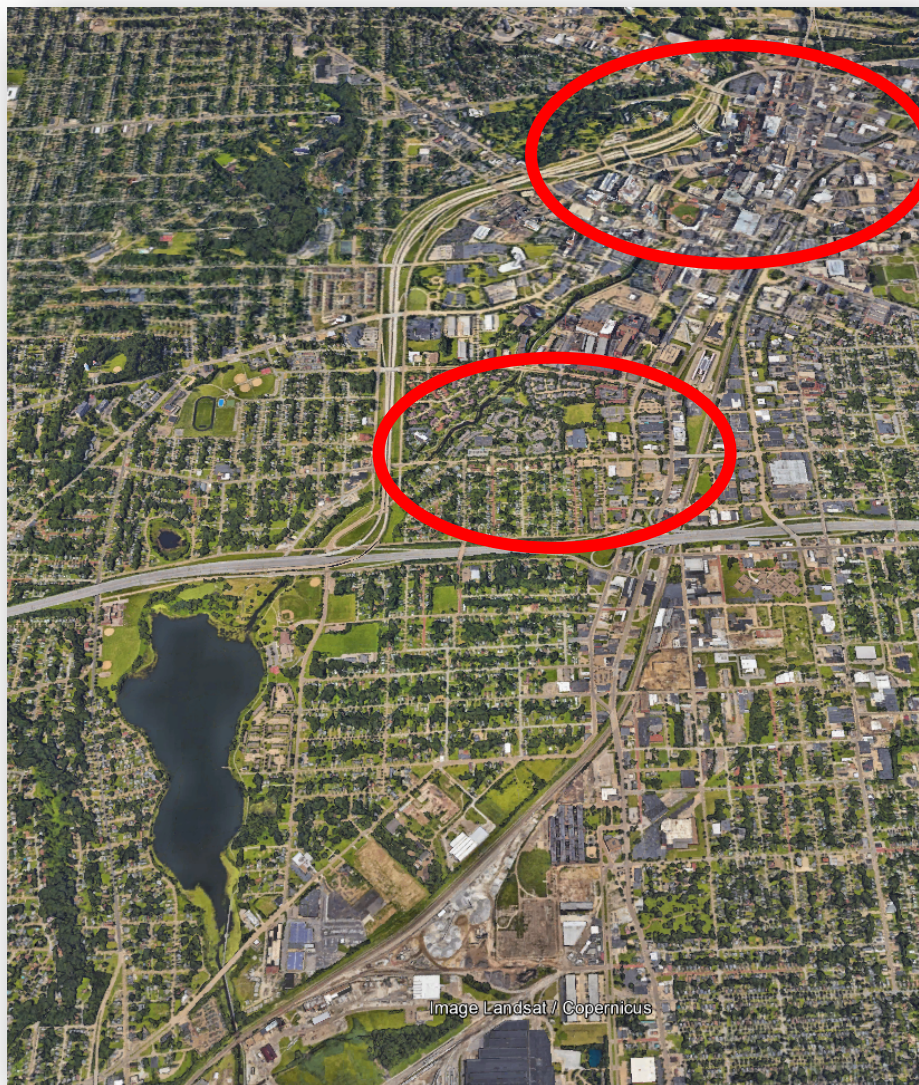


AKRON CIVIC
COMMONS

Imagine
with us!

RCC Akron:

- Downtown
- Park East



Imagine
with us!

RCC Akron:

- Downtown
- Park East
- Summit Lake



Imagine
with us!

RCC Akron:

- Downtown
- Park East
- Summit Lake



Imagine
with us!

RCC Akron:

- Downtown
- Park East
- Summit Lake
- Ohio and Erie Canal Towpath Trail



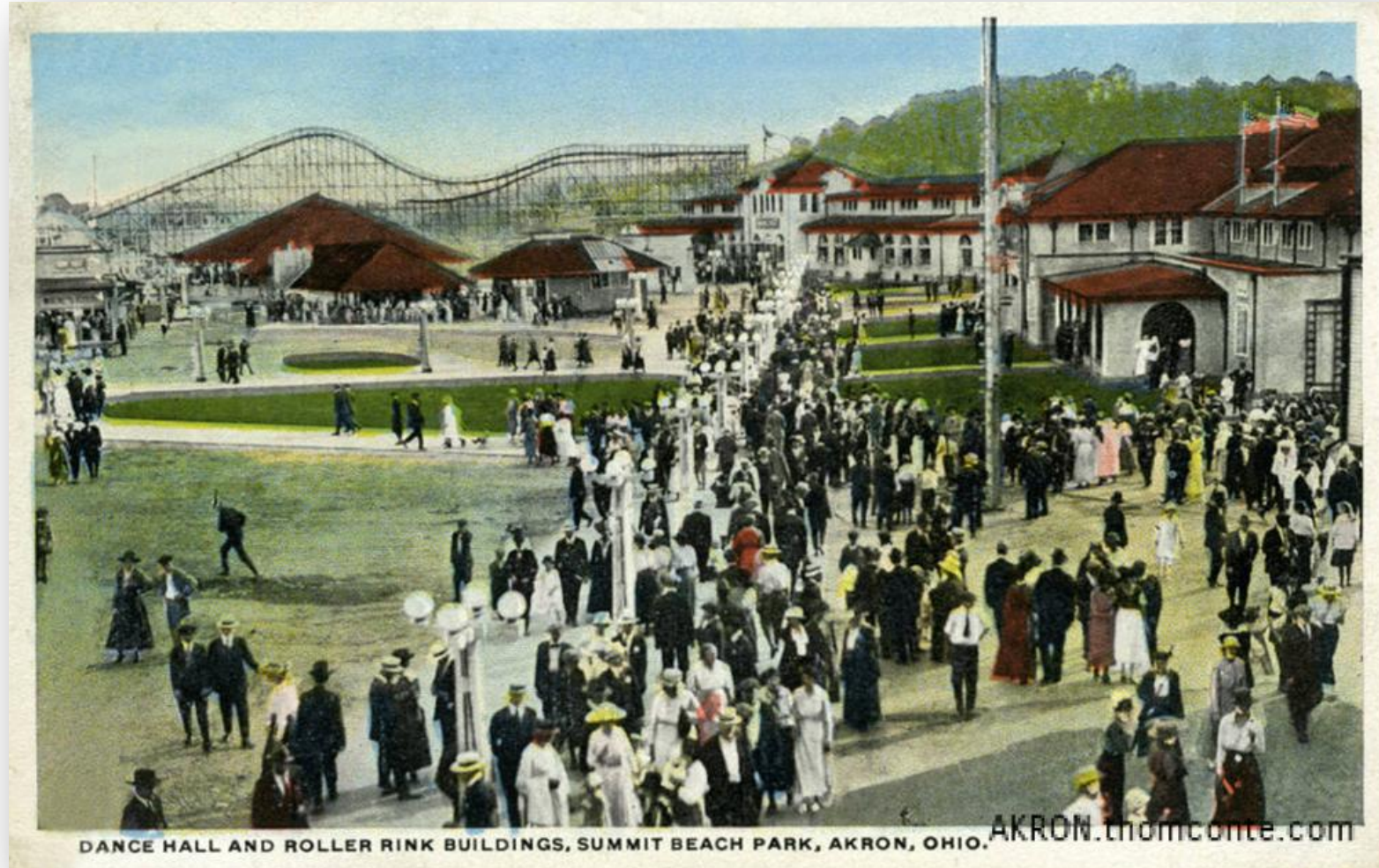
Summit Lake

Imagine
with us!



Summit Lake

Imagine
with us!



AKRON CIVIC
COMMONS

Summit Lake

Imagine
with us!



Summit Lake

Imagine
with us!



Summit Lake

Imagine
with us!



Summit Lake

Imagine
with us!



At Home in
AKRON, OH

Imagine
with us!

What's being done:

- Environmental studies

THE
TRUST
for
PUBLIC
LAND



AKRON CIVIC
COMMONS

Imagine
with us!

What's being done:

- Environmental studies
- Less mowing



Imagine
with us!

What's being done:

- Environmental studies
- Less mowing



Imagine
with us!

What's being done:

- Environmental studies
- Less mowing



Imagine
with us!

What's being done:

- Environmental studies
- Less mowing



AKRON CIVIC
COMMONS

Imagine
with us!

What's being done:

- Environmental studies
- Less mowing



Imagine
with us!

What's being done:

- Environmental studies
- Less mowing
 - Keeps geese in water
 - Creates barrier at lakes edge



AKRON CIVIC
COMMONS



Imagine
with us!

What's being done:

- Environmental studies
- Less mowing
 - Increase diversity
 - Reduces emissions
 - Improves water quality



AKRON CIVIC
COMMONS



Imagine
with us!

What's being done:

- Environmental studies
- Less mowing
- Reducing impervious



Imagine
with us!

What's being done:

- Environmental studies
- Less mowing
- Reducing impervious



Imagine
with us!

What's being done:

- Environmental studies
- Less mowing
- Reducing impervious
- Adaptive reuse



Imagine
with us!

What's being done:

- Environmental studies
- Less mowing
- Reducing Impervious
- Adaptive reuse



Imagine
with us!

What's being done:

- Environmental studies
- Less mowing
- Reducing impervious
- Adaptive reuse



Imagine
with us!

What's being done:

- Environmental studies
- Less mowing
- Reducing impervious
- Adaptive reuse



Imagine
with us!

Great things are happening:

Thank you
RCC!

