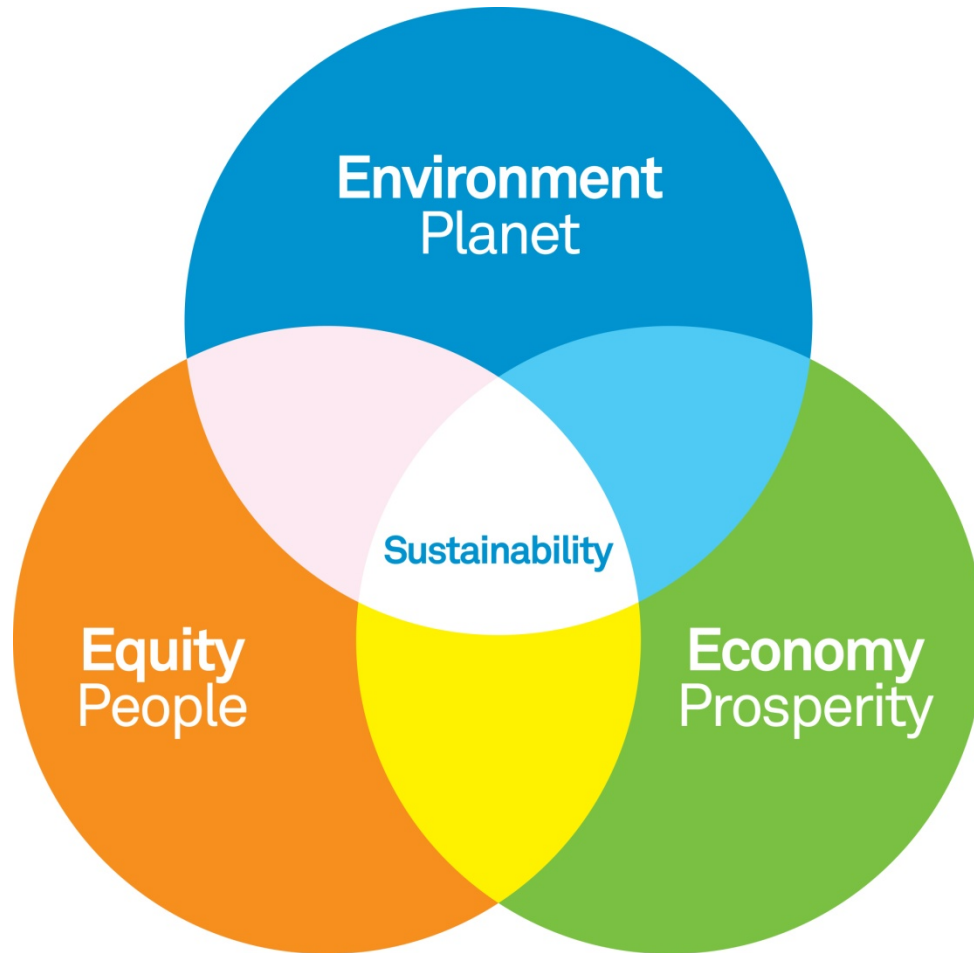


Creating a Seamless Public Realm

Mitchell Silver, FAICP
NYC Parks Commissioner

Civic Commons
September 28, 2017

Email: Mitchell.silver@parks.nyc.gov
Twitter & Instagram: [@mitchell_silver](https://twitter.com/mitchell_silver)

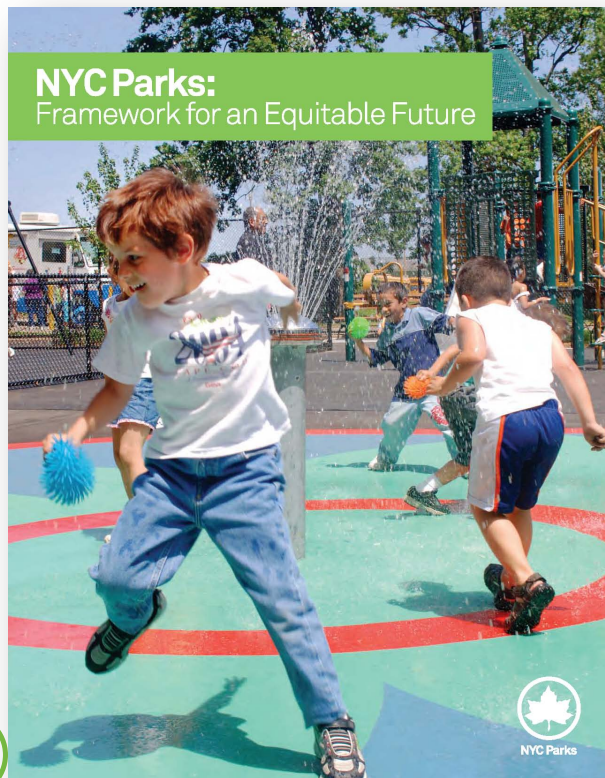




Parks

Equity

Framework for an Equitable Future



Capital in Context

- NYC Parks spent ~ **\$5.7 billion** on capital improvements over the past two decades
- Acquired **1,168 acres** since 2001
- **81.5%** New Yorkers live within a walk of a park
- Proximity vs. Quality
- Equity = Fairness



Equity in Context

- **215 parks** across the city received minimal capital investment - **less than \$250,000 over 20 years**



Community Parks Initiative

CPI Capital Program

Invest **\$318M** to re-create **67 community parks**

Targeted Physical Improvements

85 smaller-scale physical park improvement projects

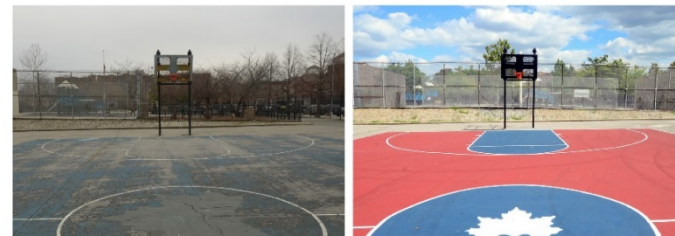
- All work done with in-house crews
- Repainting/repairing play equipment
- Repainting handball courts and multi-purpose play areas
- Repainting/repairing benches
- Improving horticultural areas and lawn restoration
- Sports coating



NYC Parks



FOUNTAIN OF YOUTH PLAYGROUND // THE BRONX



SOUTH PACIFIC PLAYGROUND // BROOKLYN



SEAN'S PLACE // QUEENS



Park or parking lot?

Bowne Playground, Queens



Stockton Playground, Brooklyn

**No adults except
in the company
of a child**



www.nyc.gov/parks

Design Precedent for New Parks



Spray Showers



Adult Fitness



Design Precedent for New Parks



Playground Ages 2-5



Fitness, Handball Courts, Gathering Areas

Design Precedent for New Parks



Planted Areas



Planting/Stormwater Capture

Design Precedent for New Parks



Multi-generational social seating



Impacts of the Community Parks Initiative

The Community Parks Initiative will engage New Yorkers in transforming New York City's parks and making it more equitable and vibrant.

65.5

acres of urban
parkland improved

55

neighborhoods
impacted by
capital projects,
programming,
partnership and
maintenance
efforts

35

capital projects
provide improved
parks amenities
and access to
approximately
220,000 New
Yorkers who live
within a **10-minute**
walk of these parks

24

Community Districts
reached by the full
Community Parks
Initiative, with a
total population
of **3,270,000**, where
36% live below the
federal poverty line
and **41%** are under
age 18





Parks

Planning & Placemaking

Placemaking and Spacemaking

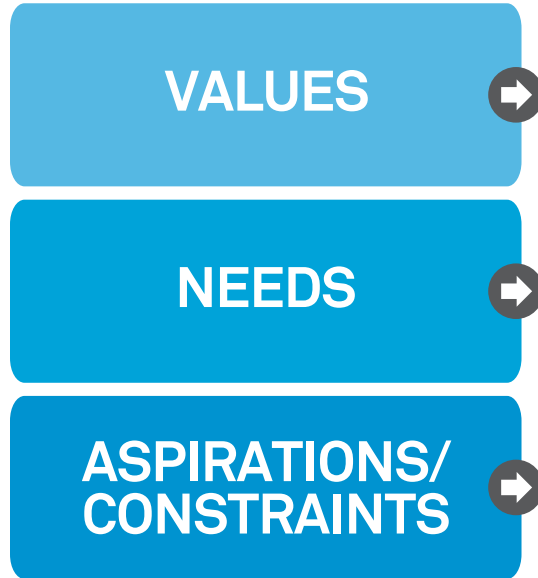
- Experience of Place
- Memory of Place
- Authenticity of Place

Plan for the Consumers

Greatest Generation	1901-1924
Silent/Mature Generation	1923-1945
Baby Boom Generation	1946-1964
Generation X	1965-1981
Generation Y	1982-1995
Generation Z	1996-today



Future Consumer Demand



**Future consumer
preferences and
market demands**

Generational Profiles: New York City

Greatest Generation	1901-1924	1.9%
Silent/Mature Generation	1923-1945	10.9%
Baby Boom Generation	1946-1964	24.5%
Generation X	1965-1981	22.6%
Generation Y	1982-1995	22.3%
Generation Z	1996-today	17.8%
XYZ total	(53 and under)	62.7%



Consumer Preferences

Previous generations were
consumers of goods.

New generations are
consumers of experiences.

We should not be just
designers and planners, **but**
experience builders





130 million visits to parks annually

So you can't parallel park.
It'll be our little secret.

ELSEA HOTELS



The truth about what we have been made to believe, buy, and eat

Peter Lauder, PhD





What about the Public Realm?

Streets, sidewalks, bike lanes, parks, and public spaces are viewed as separate systems and managed by different agencies.

Parks	14%
Streets and sidewalks	26%
NYC Public Realm	40%



Photo: ny.curbed.com



Parks Without Borders

Parks



The sidewalk adjacent to the park should be considered the outer park
- Frederick Law Olmsted



NYC City Charter, Chapter 21

Parks: to manage and care for all parks, squares, public places, the sidewalks immediately adjoining the same..



Rufus King Park, Queens



Bellrose Playground, Queens



John Jay Playground, Manhattan



Father Jerry Popieluszko Square, Brooklyn





Commodore Barry Park, Brooklyn





Highland Park, Queens



Thomas Greene Playground, Brooklyn



Thomas Greene Playground, Brooklyn



City Centre Park, Greensboro, NC



Parks Without Borders

Parks

One New York

The Plan for a Strong and Just City



The City of New York
Mayor Bill de Blasio

Anthony Shorris
First Deputy Mayor

NYC

OneNYC calls for greater access to parks for all New Yorkers.

Parks Without Borders is a key strategy to achieve this goal.

\$50 million has been set aside to make it a reality.

Initiative 2

Improve open spaces through Parks Without Borders, a new strategy to enhance neighborhood access and connectivity



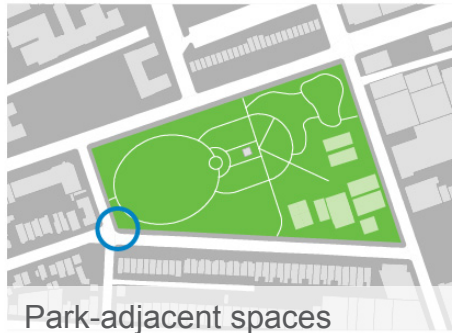
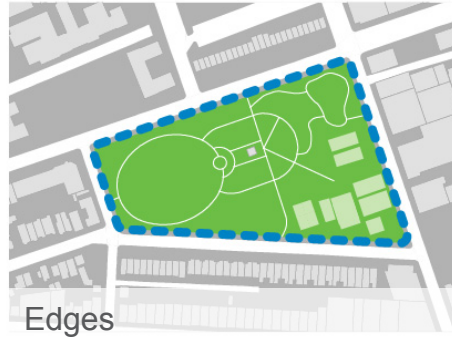
Father Demo Square

Parks Without Borders is a new effort to make our city's outdoor spaces more welcoming, accessible, and better connected to surrounding neighborhoods.

The quality of a city's outdoor space depends on an integrated system in which parks, sidewalks, pedestrian plazas, and other open spaces are connected to each other, improving access to neighborhood resources and promoting community interaction.

To make Parks Without Borders a reality, NYC Parks will take a new approach to park entrances and boundaries where they most directly interact with the surrounding community. NYC Parks will improve fences and gates and add other amenities, such as public art and landscaping, to make entrances more inviting. Along park boundaries, we

Parks Without Borders is a **new design approach** focusing on improving the areas where parks and neighborhoods meet: **entrances**, **edges**, and **park-adjacent spaces**.



Entrances

Opening sight lines, removing gates, and adding furnishings and amenities can draw more people into the park.



Before



After

Edges

Allowing better views into the park and making better use of the sidewalk can make neighborhoods more beautiful.



Before



After

Park-Adjacent Spaces

Rethinking underused spaces and adding amenities can create new centers of community activity.



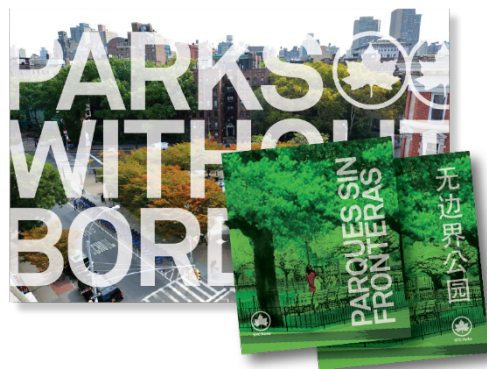
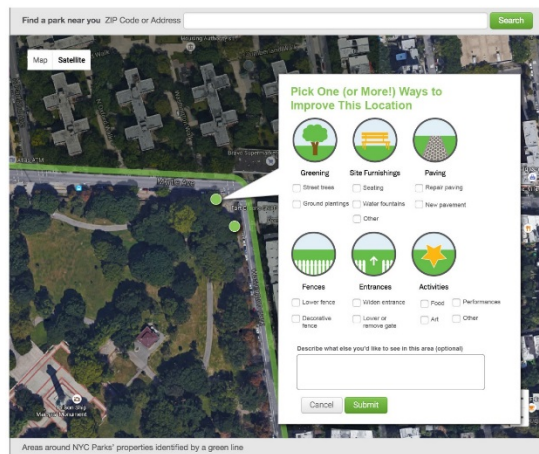
Before



After

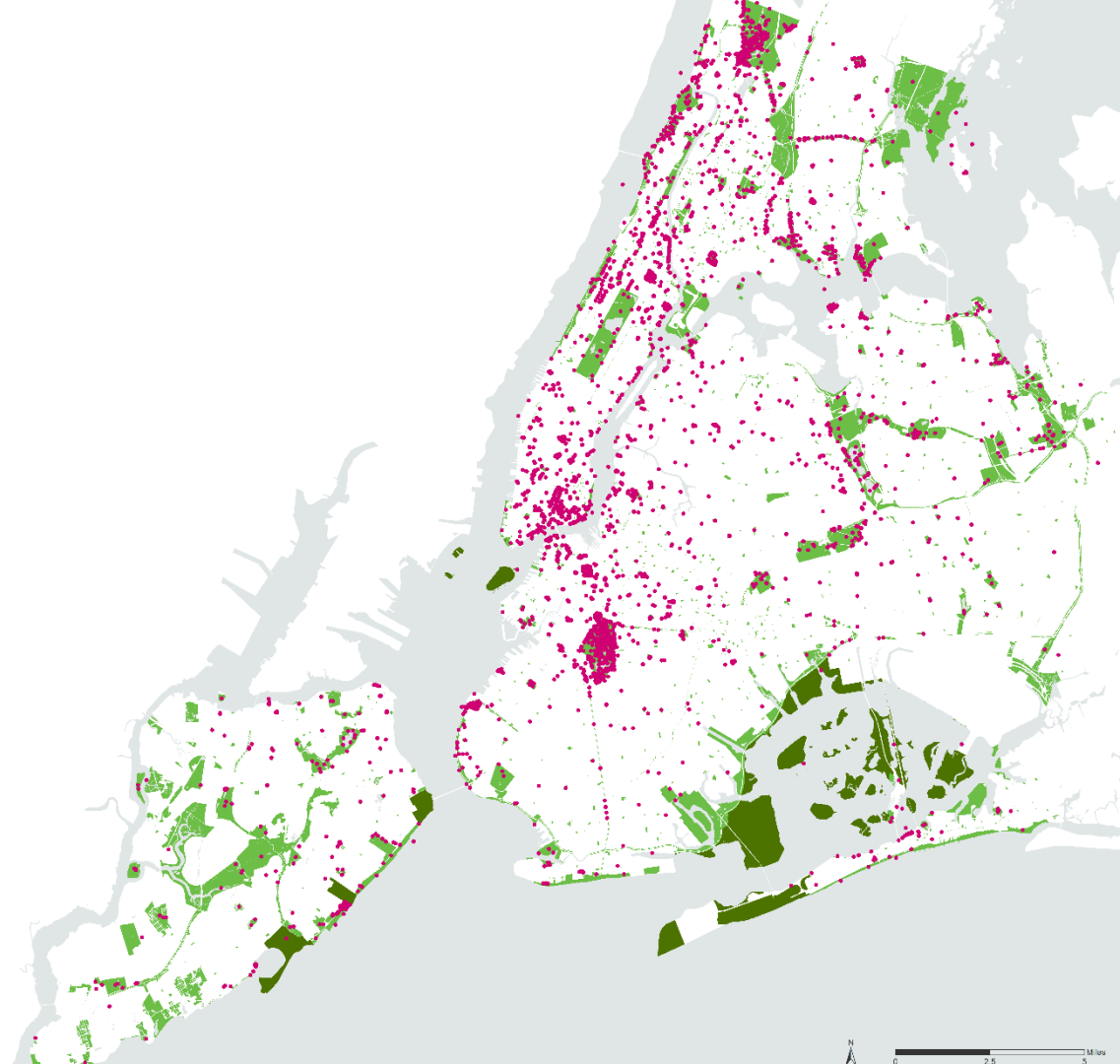


Public Feedback



Public Feedback

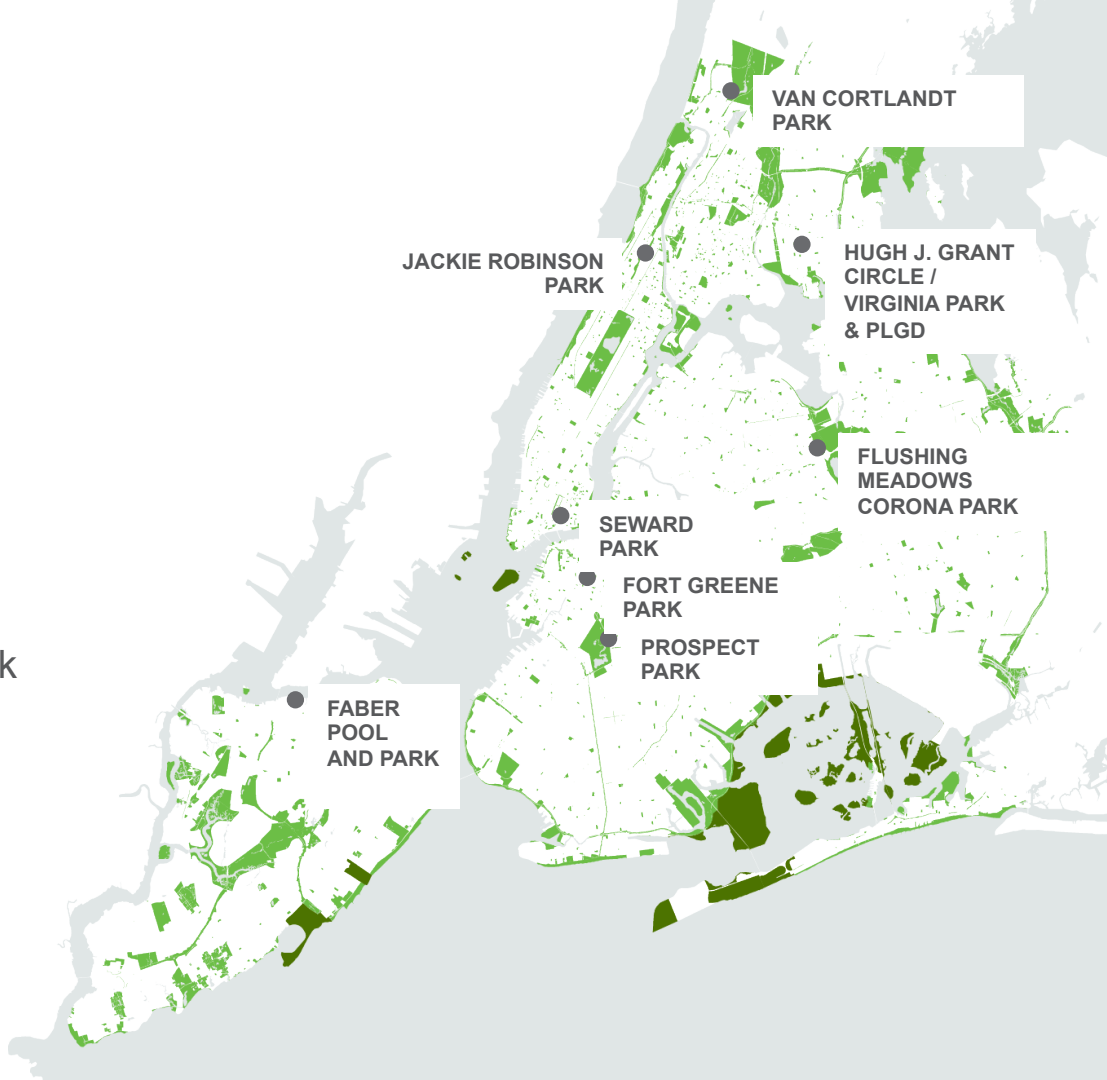
- Map online
November 12–March 1
- Over **6,100** nominations
- **692** Parks
- All **59** community boards
- All **5** boroughs



8 Showcase Projects

50 Pipeline Projects

- Faber Pool and Park
- Seward Park
- Jackie Robinson Park
- Van Cortlandt Park
- Hugh Grant Circle / Virginia Park and Playground
- Flushing Meadows Corona Park
- Fort Greene Park
- Prospect Park



Travers Park

Queens

> United States • NY • Queens Co. • Jackson Heights



Capturing Park-Adjacent Spaces



NYC Parks



NYC Parks



Travers Park

Existing Edge Condition



Transforming the Edge



Travers Park

Perimeter Amenities



Travers Park

Existing Adjacent Space



Old Street Bed Transformed



Travers Park

Extending the Beauty of the Park



Travers Park



Anatomy and soul of a place

Create more equitable parks system
with a seamless public realm



An aerial photograph of a city intersection, likely in New York City. The scene is dominated by a large, dense cluster of trees in the center, many of which have vibrant orange and yellow autumn foliage. Surrounding the trees are several multi-story brick buildings, some with classic architectural features like ornate window frames. In the foreground, a wide street with crosswalks and traffic lights is visible. A yellow taxi is parked on the right side of the street, and a white delivery truck is driving. A large number of blue bicycles are parked in a designated rack on the left side of the intersection. The sky is overcast, and the overall atmosphere is one of a busy urban environment during the fall season.

Thank you